

RIEGL miniVUX[®]-1UAV

- **very compact & lightweight (1.55 kg / 3.4 lbs)**
- **360° field-of-view**
- **robust aluminum housing, ready to be mounted on multi-rotor, rotary-wing, and fixed-wing UAVs**
- **makes use of RIEGL's unique echo signal digitization and online waveform processing**
- **multiple target capability – up to 5 target echoes per laser shot**
- **scan speed up to 100 scans/sec**
- **measurement rate up to 100,000 measurements/sec**
- **mechanical and electrical interface for IMU mounting**
- **exceptionally well suited to measure in snowy and icy terrains**
- **user-friendly, application- and installation-oriented solutions for integration**

The **RIEGL miniVUX-1UAV** is an extremely lightweight airborne laser scanner, designed specifically for integration with UAS/UAV/RPAS.

The small and sophisticated design of the stable aluminum housing offers various integration possibilities with platforms that offer restricted space or payload capabilities. The 360° field of view allows complete acquisition of the environment.

An easy-to-remove SD card for data storage, and/or the option for streaming the scan data via LAN-TCP/IP interface, in combination with the modest power consumption of the scanner, enable straight-forward integration with most UAS/UAV/RPAS types.

The **RIEGL miniVUX-1UAV** makes use of **RIEGL's** unique Waveform-LiDAR technology, allowing echo digitization and online waveform processing. Multi-target resolution is the basis for penetrating even dense foliage. As a further special feature, the wavelength is optimized for the measurement of snowy and icy terrain.

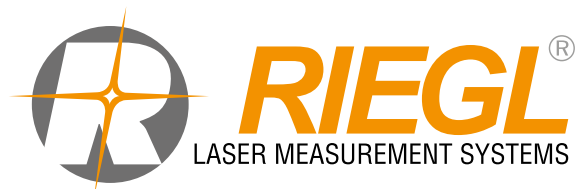
In addition to the stand-alone version of the miniVUX-1UAV, **RIEGL** also offers fully-integrated solutions.

Typical applications include

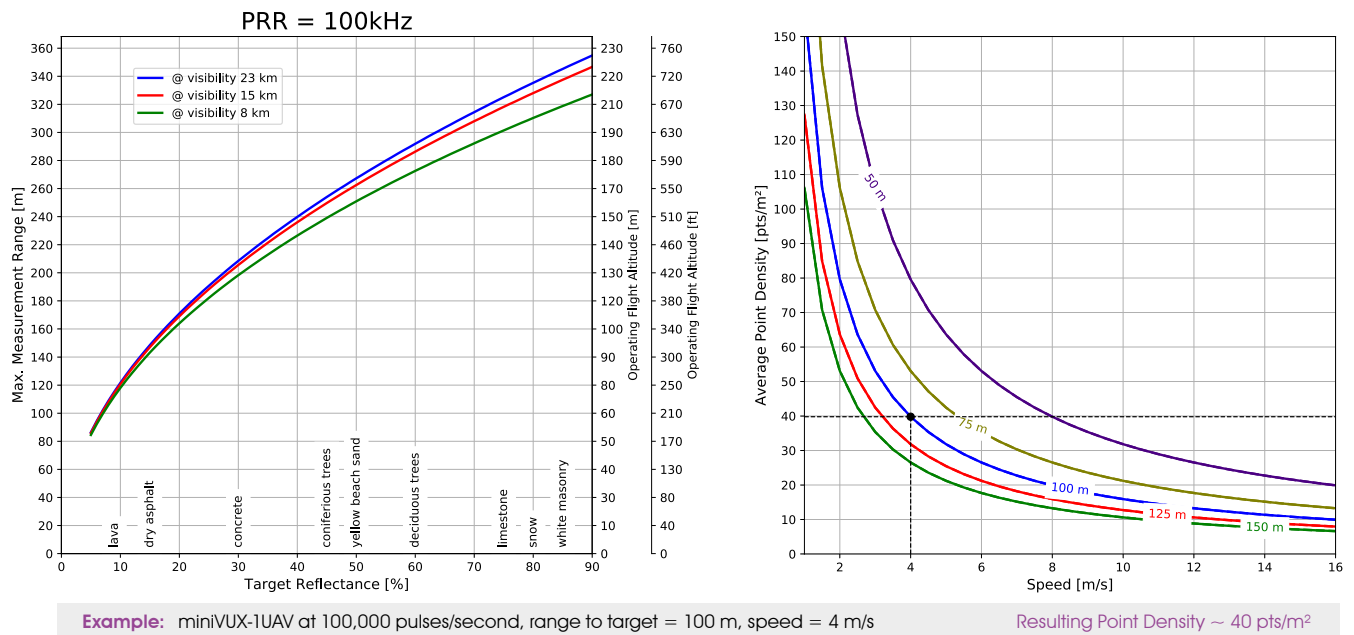
- **Agriculture & Forestry**
- **Glacier and Snowfield Mapping**
- **Archeology and Cultural Heritage Documentation**
- **Construction-Site Monitoring**
- **Landslide Monitoring**



visit our website
www.riegl.com

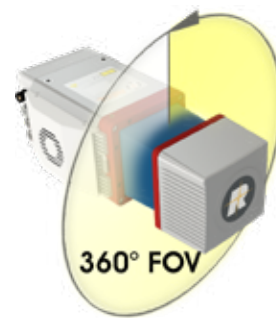
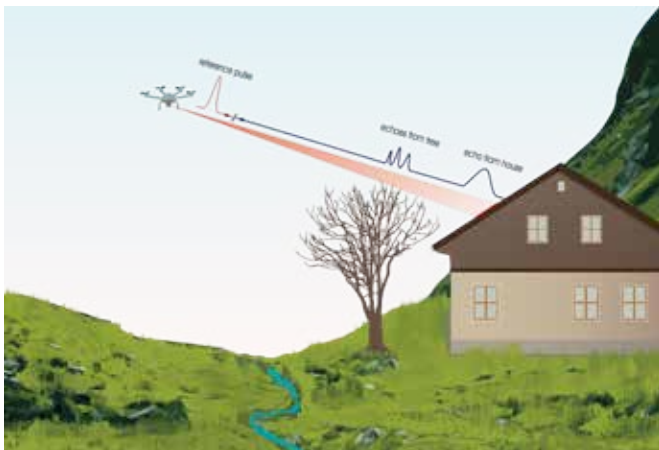


Maximum Measurement Range vs. Target Reflectance *RIEGL* miniVUX®-1UAV



The following conditions are assumed for the Operating Flight Altitude AGL

- target size \geq laser footprint
- average ambient brightness
- operating flight altitude given at a FOV of $\pm 45^\circ$

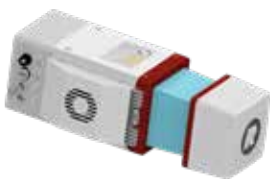


MTA1: no ambiguity / one transmitted „in the air“

RIEGL miniVUX-SYS System Integration Options

Besides of the stand-alone miniVUX-1UAV LiDAR engine, *RIEGL* offers also system solutions, combining the miniVUX-1UAV with IMU/GNSS systems of different performance and of different form factors as well as optional RGB camera systems. Additionally, a special add-on to the miniVUX-SYS allows for straight forward integration with your multi-rotor UAV, e.g. a DJI Matrice M600.

RIEGL miniVUX-1UAV with APX-15 UAV¹⁾



- IMU/GNSS unit integrated with LiDAR engine
- total weight approx. 2 kg
- interfaces for up to 2 cameras
- suited for integration into fixed-wing UAVs

RIEGL miniVUX-1UAV with APX-20 UAV¹⁾



- higher-grade IMU/GNSS unit partly integrated with LiDAR engine
- total weight approx. 2.5 kg
- interfaces for up to 2 cameras
- suited for integration into all types of UAVs

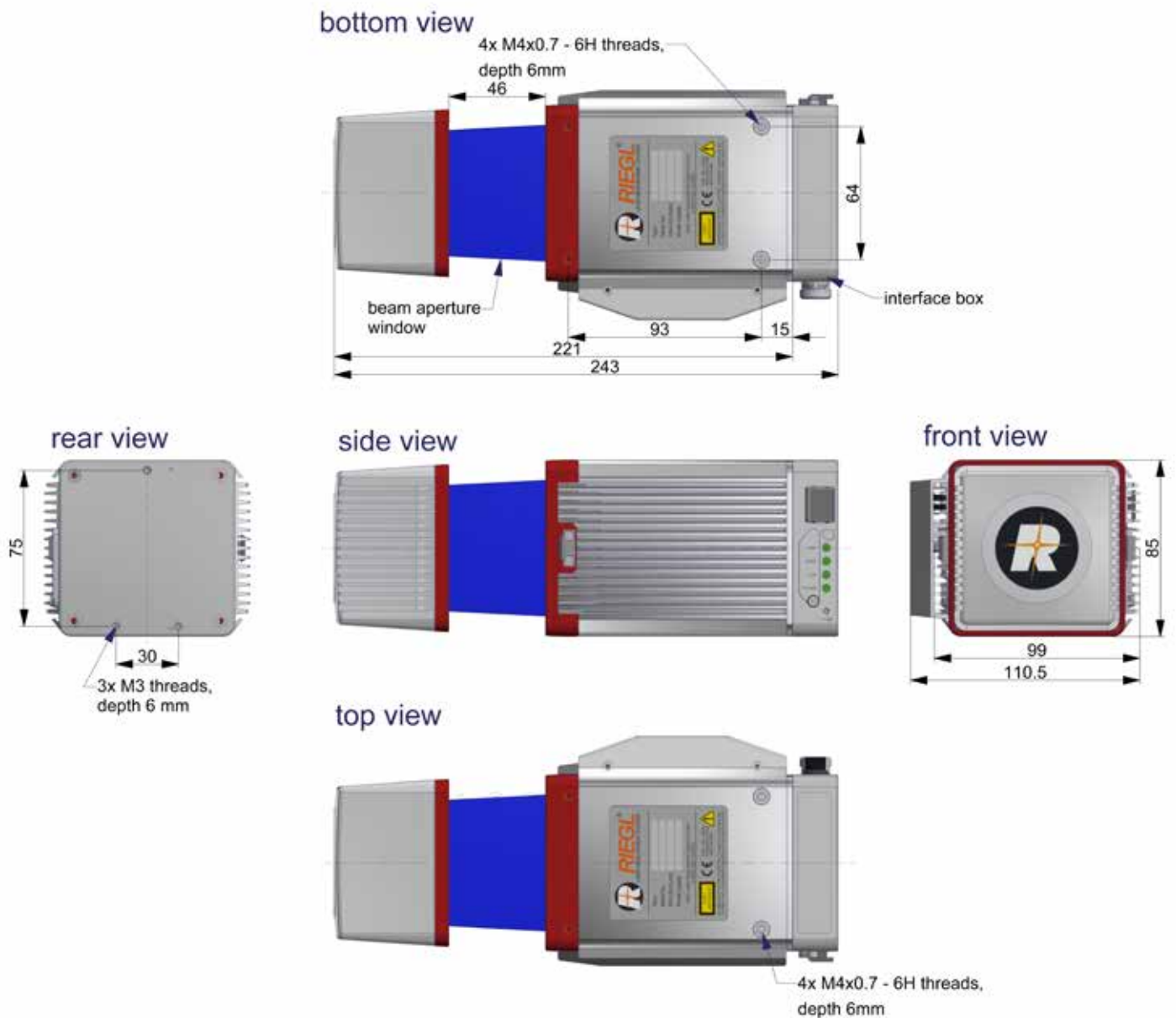
RIEGL Integration Kit 600



- add-on to the miniVUX-SYS coming with shock-absorbing mounting-kit, power supply module and cabling
- total weight approx. 0.7 kg (without sensor and camera)
- suited for integration into multi-rotor UAVs

Please contact sales@riegl.com to get more detailed information.

¹⁾ See technical details in the corresponding Applanix datasheet

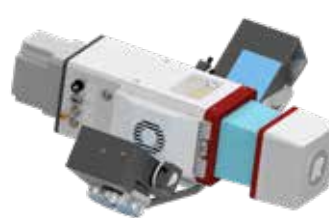


all dimensions in mm

RIEGL miniVUX®-1 UAV Camera Options

***RIEGL* miniVUX-1 UAV LiDAR Sensor equipped with APX-15 UAV¹⁾**

***RIEGL* miniVUX-1 UAV LiDAR Sensor equipped with APX-20 UAV¹⁾**



with two Sony Alpha 6000 cameras (oblique mount)

with Nadir-looking camera e.g. Sony Alpha 6000 camera or Sony Alpha 7R III

with two Sony Alpha 6000 cameras (oblique mount)

with Nadir-looking camera e.g. Sony Alpha 6000 camera or Sony Alpha 7R III

¹⁾ See technical details in the corresponding Applanix datasheet

Technical Data RIEGL miniVUX®-1 UAV

Laser Product Classification

Class 1 Laser Product according to IEC 60825-1:2014

The following clause applies for instruments delivered into the United States: Complies with 21 CFR 1040.10 and 1040.11 except for conformance with IEC 60825-1 Ed.3., as described in Laser Notice No. 56, dated May 8, 2019.

CLASS 1
LASER PRODUCT

Range Measurement Performance

Measuring Principle

time of flight measurement, echo signal digitization, online waveform processing

Laser Pulse Repetition Rate PRR ¹⁾	100 kHz
Max. Measuring Range ²⁾	
natural targets $\rho \geq 20\%$	170 m
natural targets $\rho \geq 60\%$	290 m
natural targets $\rho \geq 80\%$	330 m
Typ. Operating Flight Altitude AGL ^{1) 3)}	
natural targets $\rho \geq 20\%$	100 m (330 ft)
natural targets $\rho \geq 60\%$	160 m (525 ft)
Max. Number of Targets per Pulse ⁴⁾	5

1) Rounded values.
2) Typical values for average conditions. Maximum range is specified for flat targets with size in excess of the laser beam diameter, perpendicular angle of incidence, and for atmospheric visibility of 23 km. In bright sunlight, the max. range is shorter than under overcast sky.
3) Flat terrain assumed, scan angle $\pm 45^\circ$ FOV
4) If more than one target is hit, the total laser transmitter power is split and, accordingly, the achievable range is reduced.

Minimum Range

3 m

Accuracy ^{5) 7)}

15 mm

Precision ^{6) 7)}

10 mm

Laser Pulse Repetition Rate ¹⁾

100 kHz

Max. Effective Measurement Rate ¹⁾

100 000 meas./sec. (@ 100 kHz PRR & 360° FOV)

Echo Signal Intensity

for each echo signal, high-resolution 16 bit intensity information is provided near infrared

Laser Wavelength

1.6 x 0.5 mrad

Laser Beam Divergence ⁸⁾

1.6 x 0.5 mrad

Laser Beam Footprint

160 mm x 50 mm @ 100 m

- 5) Accuracy is the degree of conformity of a measured quantity to its actual (true) value.
6) Precision, also called reproducibility or repeatability, is the degree to which further measurements show the same result.

- 7) One sigma @ 50 m range under RIEGL test conditions.
8) Measured at 50% peak intensity, 1.6 mrad corresponds to an increase of 160 mm of beam diameter per 100 m distance.

Scanner Performance

Scanning Mechanism

rotating mirror

Field of View (selectable)

up to 360°

Scan Speed (selectable)

10 - 100 revolutions per second, equivalent to 10 - 100 scans/sec

Angular Step Width $\Delta \varphi$ (selectable)

$0.036^\circ \leq \Delta \varphi \leq 0.36^\circ$

between consecutive laser shots

Angle Measurement Resolution

0.001°

Interfaces

Configuration, Scan Data Output & Communication with External Devices GNSS Interface

2 x LAN 10/100/1000 Mbit/sec
WLAN IEEE 802.11 a/b/g/n
Serial RS-232 interface for data string with GNSS-time information,
TTL input for 1PPS synchronization pulse.
Power Output 10 V DC, max 4.5 W ⁹⁾
2 x TTL input/output ¹⁰⁾, 1 x Remote on/off
2 x GNSS RS-232 Tx & PPS, Power, Trigger, Exposure ¹⁰⁾
for SDHC/SDXC memory card 32 GByte (can be upgraded to 64 GByte)

General IO & Control

Camera Interface

Memory Card Slot

- 9) internally available (not available with standard interface box)
10) 1x externally available with standard interface box

General Technical Data

Power Supply Input Voltage / Consumption

11 - 34 V DC / typ. 18 W @ 100 scans/sec

Main Dimensions (L x W x H) / Weight

with Cooling Fan

243 x 111 x 85 mm / approx. 1.6 kg

without Cooling Fan

243 x 99 x 85 mm / approx. 1.55 kg

Humidity

max. 80 % non condensing @ 31°C

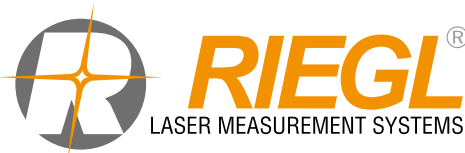
Protection Class

IP64, dust and splash-proof

Temperature Range ¹¹⁾

-10°C up to +40°C (operation) / -20°C up to +50°C (storage)

- 11) Continuous operation at ambient temperature of $\geq 30^\circ\text{C}$ ($\geq 86^\circ\text{F}$) requires a minimum amount of air flow at approx. 3 m/s. For applications where a 3 m/s air flow along the cooling fins cannot be guaranteed, the cooling fan has to be used.



RIEGL
Laser Measurement Systems GmbH
Riedenburgstraße 48
3580 Horn, Austria
Phone: +43 2982 4211
office@riegl.co.at | www.riegl.com

RIEGL USA Inc. | info@rieglusa.com | www.rieglusa.com
RIEGL Japan Ltd. | info@riegl-japan.co.jp | www.riegl-japan.co.jp
RIEGL China Ltd. | info@riegl.cn | www.riegl.cn
RIEGL Australia Pty Ltd. | info@riegl.com.au | www.riegl.com

www.riegl.com